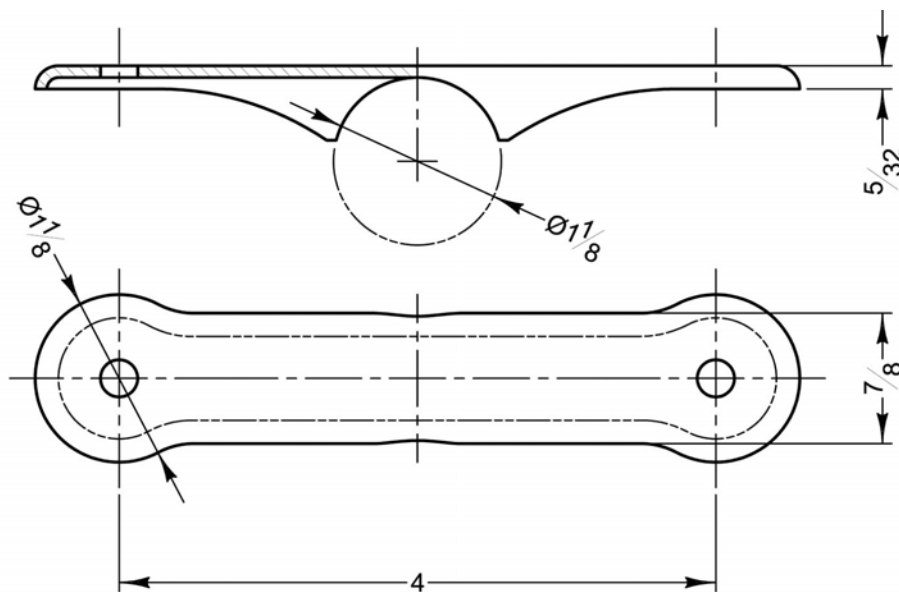


To replace damaged or missing brackets for most 1930-38 models with  $\text{\O}1\text{-}1/8$ " frame tubes.<sup>1</sup> Stamped in the original thickness 14 gauge steel to dimensions shown below. Douglas part number 10568.

# Douglas

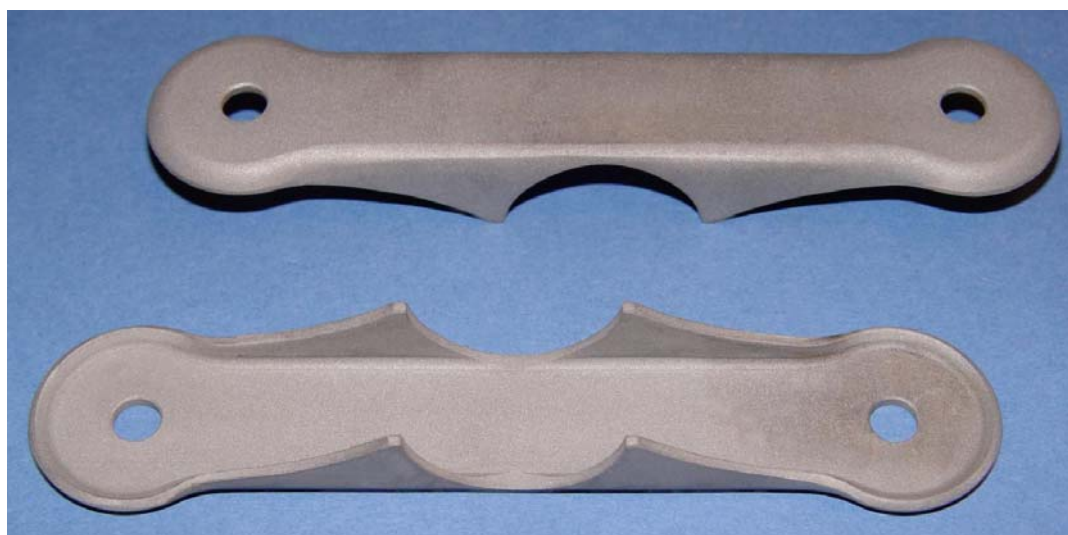
## New Petrol Tank Brackets.



- 1929* L29 (350cc)
- 1930* L3, H3 (350cc), S5 (500cc), S6, T6 (600cc)
- 1931* A31, B31 (350cc), C31 (500cc), D31, E31 (600cc)
- 1932* A32 Terrier, B32 (350cc), C32 Bulldog (500cc), D32 Greyhound, E32 Ayredale (600cc), H32 Mastif (750cc)
- 1933* D33 (600cc), H33 (750cc)
- 1934* Y (250cc), Y1 (350cc), Y2 (500cc), Z (600cc), Z1 (750cc), OW (500cc OHV), OW1 (600cc OHV)
- 1935* Comet (250cc), Cotswold (350cc), Blue Chief (500cc), Speed Special (500 & 600cc OHV), Wessex (600cc), Powerflow (750cc), Endeavour (500cc Transverse shaft drive)
- 1936* 250, 350, 500, 600
- 1937-38* DC600 (600cc)

Supplied with  $1/4$ " holes, which will need to be drilled out to suit<sup>2</sup>.

**\$10 US each.** Packing, postage, and insurance extra.



[ElamWorks@douglasmotorcycles.net](mailto:ElamWorks@douglasmotorcycles.net)

OR

D. Kephart, 1098 Smithbridge Rd., Glen Mills, PA 19342-1206 USA

<sup>1</sup> Excluding DT, SW, F/G31 & 32, Bantam, and CL38.

<sup>2</sup> There seems to be a variation in hole sizes and roundness on examples measured! Holes are left undersized so they can be opened up to suit the individual application.