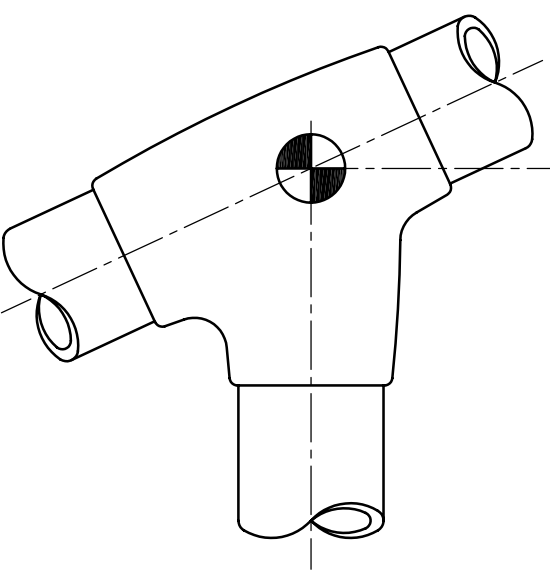
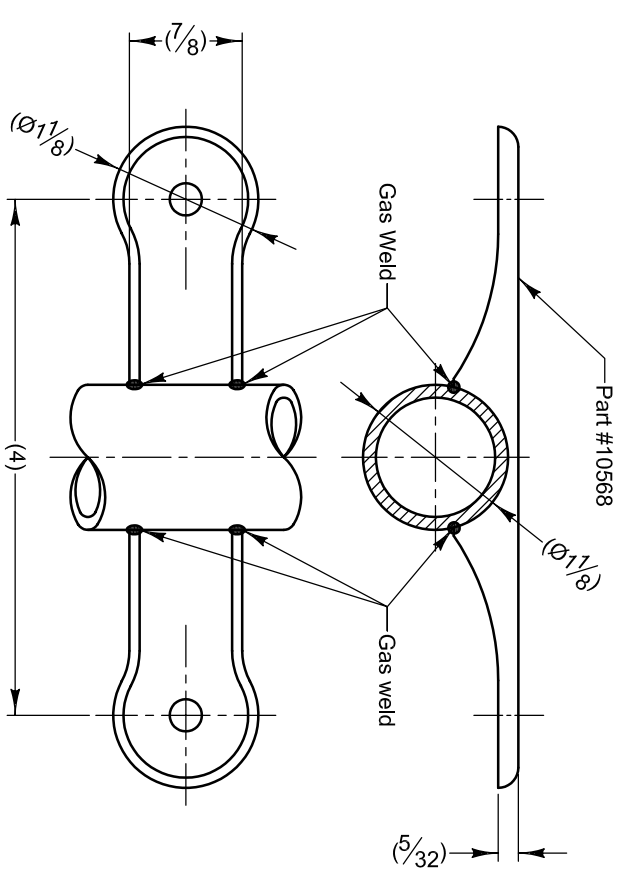


OR
Duplex cradle
Single loop



Model	L1	L2	L3
1934-35 OW/OW1	2-5/8	5-21/32	3-1/4
1931 A31	5-1/16	3	-
1936 Aero 600	4	5-1/4	-
1935 Endeavour	3-3/4	5-1/4	-
1930-33 S5/S6/T6	5-1/16	3	-
1929-31 L29/H3L3/B31	4-15/16	3	-



- Notes:**
1. Bracket #10568 likely used on most models from 1930 onwards. Known exceptions are DT/SW, F/G31, and Bantam.
 2. Holes for mounting petrol tank are undersize at $\varnothing 1/4"$. These will require drilling out to suit. There seems to be much variation, some using $\varnothing 3/8"$ and some $5/16 \times 3/8"$ slots.
 2. While the utmost care has been taken in measuring the position of the brackets, ALWAYS dry-fit the brackets with the petrol tank, to ensure correct placement and clearance with frame, forks, etc. Note too, some if not all these used rubber isolators to raise the petrol tank off the brackets.
 3. Original method to attach brackets was to gas tack-weld in four places indicated, and then silver braze joint from the inside (was not visible if job got sloppy.)
 4. Some models used an additional bracket to suspend the accumulator and horn bracket, see table for dimension if applicable.

Douglas Kephart 1098 Smithbridge Road Glen Mills, Pa. 19342-1206 U.S.A.		TITLE: Position of petrol tank bracket #10568 MODEL: Douglas motorcycle, see table MATERIAL:	
Copyright © by Douglas Kephart 3rd ANZ PRINTED IN AUSTRALIA	SHEET SCALE: REV DATE: 1 OF 1 1:1 25JAN08	REV PART NO.: A	DATE: 25JAN08
Description:		Item:	Part No.: 10568-repair
Remarks:			